

ob jec tions are coM po sers

As

de sCrip tive

tHat a ny

with

aNd that this is

or dEr ing

on Ly as a - mong in

mu sic, it a quEs tion

of mA king

wherE,

oN

Is ra ther

thaN

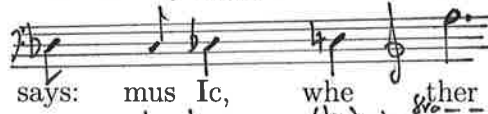
exc lus ive of judGed



Read a



lit tle Here's *8a-----*



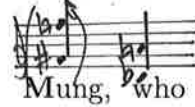
says: mus Ic, whe ther



breeZe, sudd en ly



ch cOunt ered



Mung, who



likE