

Mesostics

Voice | Voice+

Vincent Giles

2019-2020

this perFormance

stockhaUsen is an

morpholoGy

continUity

arE

at my chambEr door.

this is a Lect ure

on whIc h

per fo rmAnc e t he

Method

whi c h is the for M

which is thE

morphoLogy

of Are

possibiLity of

strUc

worK

exAmPles

ob jec tions are coM po sers

As

de sCrip tive

tHat a ny

with

aNd that this is

or dEr ing

on Ly as a - mong in

mu sic, it a quEs tion

of mA king

wherE,

oN

Is ra ther

thaN

exc lus ive of judGed



Read a



lit tle

Here's

8a-----



says:

mus Ic,

whE

8b-----

breeZe,

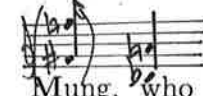
sudd en

ly



ch

cOunt ered



Mung,

who



likE

mAselli. corpse the

to the very productionN

that cOmical

and righT.

wHat is

possiblE both visually

coRpse at the

tO

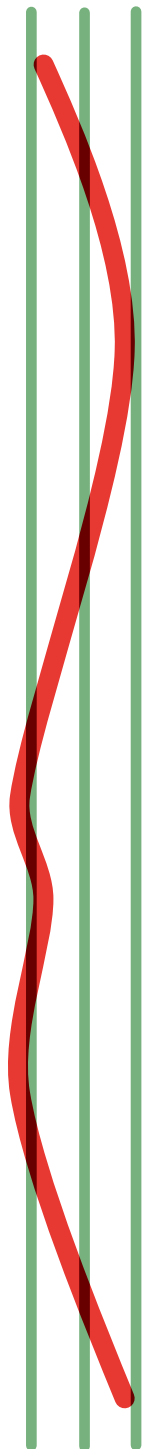
meaT

rigHt

rarE

foR

L M H



5
our im ag ined fu ture neW

7
su pEr u nion to bar gain for

5 7
Con di tions for

5 7
Ar tists.

7
News,

3
or o ther me di A

5
worLd

we

5 3
woRk in.

5 7 2 7
thE of co vid 19 in

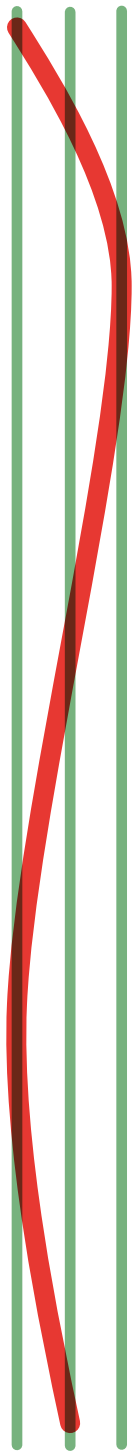
5 3
mA ny,

5
Da mage

5
to ess aY will out line

3
tHis

L M H



5

att Empt

7

A

7

Re sponse

3 2 3

co vid 19 and

5

To

7

wHat may

5

bE

5 3

some con text to these i deas as they

3

Been

3 7

me an deR ing a bout in my

5

at cou plE

5

of it mAy

3

To

5

mucH

3

I

L M H



Musical notation for the lyrics "can. i wish beG". The first line shows a treble clef, a key signature of one sharp (F#), and a 2/4 time signature. The melody consists of a half note G4, a quarter note A4, and a quarter note B4. The second line shows a treble clef, a key signature of one sharp (F#), and a 2/4 time signature. The melody consists of a quarter note C5, a quarter note D5, a quarter note E5, and a quarter note F#5. The lyrics "can. i" are written below the first line, and "wish beG" are written below the second line. The word "can." is in blue, and "i" is in black. The word "wish" is in black, and "beG" is in blue. There are also some small blue markings above the notes.